

Narcotrend[®]-Compact M

ICU Version



Areas of application for EEG monitoring in intensive care patients:

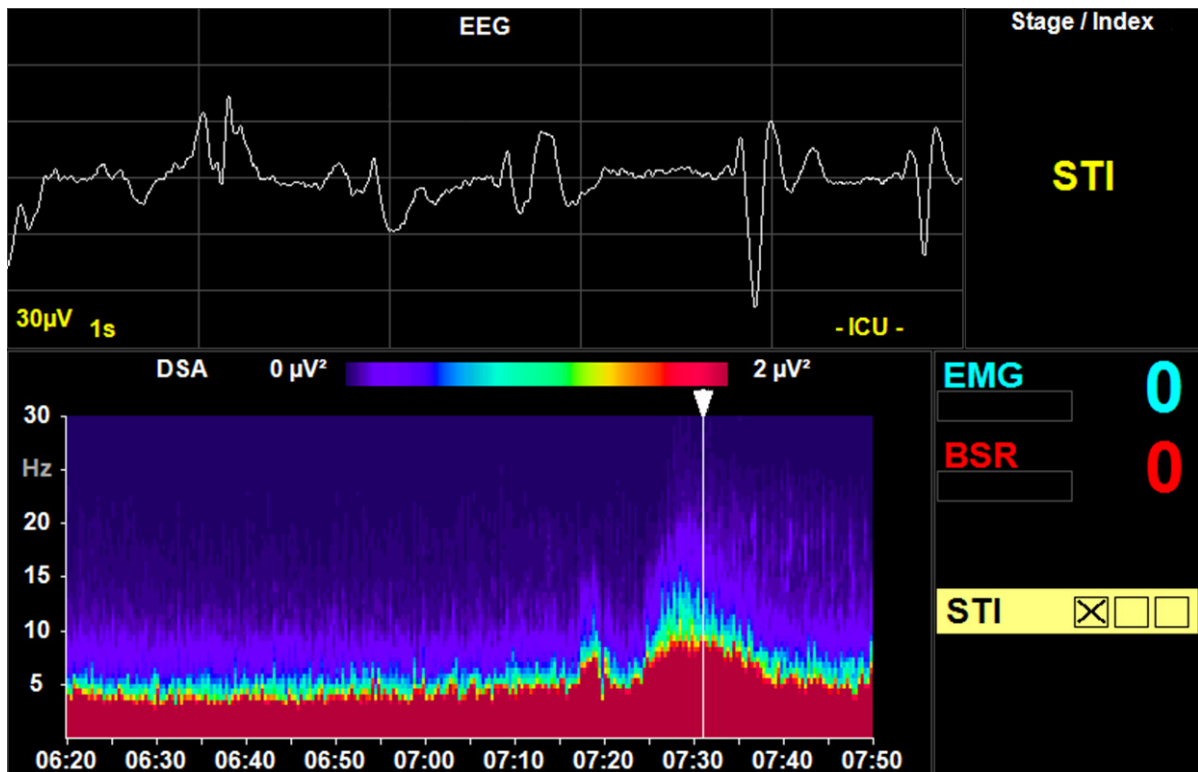
- Assessment of **depth of sedation**
- Therapy monitoring in patients experiencing **cerebral seizures**
- Assessment of brain function after **hypoxic events**
- Assessment of the **prognosis** after resuscitation

ICU version of the Narcotrend Compact M:

- **Bedside use, continuous monitoring**
- **1 or 2 EEG channels**
- Electrodes can be **flexibly positioned**, advantageous, e.g., in prone position
- **Automatic classification** of the EEG
- Detection of **epileptiform EEG activity** is supported by the parameter STI (Sharp Transient Intensity)
- **Artifact detection** adapted to ICU patient conditions

In the ICU version of the Narcotrend-Compact M, the automatic EEG classification, as in the OR version, is **adjusted to the patient's age**. The monitor can be used across all ages, from very young children to the elderly.

Application example:



Narcotrend-Compact M screen, Density Spectral Array (DSA)

Raw EEG signal (top): EEG with epileptiform activity.

DSA course: initially sedation EEG, from about 7:15 a.m. phase with epileptiform activity; the arrow marks the current time.

Yellow STI bar on the right: indicates steep/sharp components detected in the EEG signal.

Features:

- 1 or 2 channels of raw EEG
- Automatic EEG classification, including EEG classification for infants
- Artifact detection adapted to ICU EEG
- Trend displays:
 - Cerebrogram
 - Density Spectral Array (DSA)
 - Median / Spectral Edge Frequency
 - Amplitude-integrated EEG (aEEG)
 - Rel. Band Activities
- Power Spectrum
- Burst Suppression Ratio (BSR)
- STI (supports seizure detection)
- EMG index
- Print function for the cerebrogram (creation of pdf file)
- Integrated EEG amplifier
- Battery